

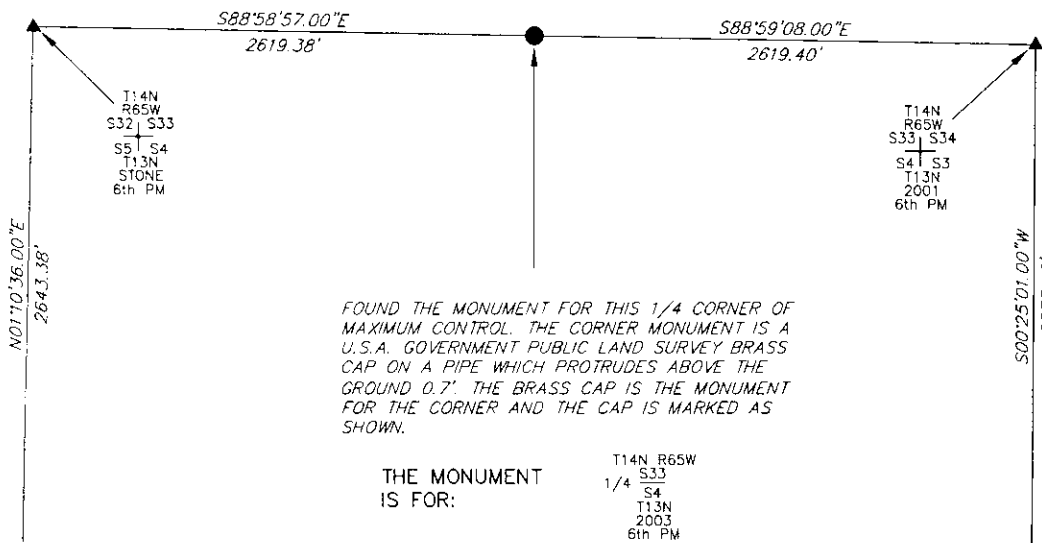
# State of Wyoming Corner Record

## CORNER PERPETUATION AND FILING ACT,

Regulations of the Board of Registration (or Professional Engineers and Land Surveyors.)

Reverse side of this form may be used if more space is needed.

Record of original survey and citation of source of historic information (if corner is lost or obliterated). Description of corner monumentation evidence found and/or monument and accessories established to perpetuate the location of this corner. Sketch of relative location of monument, accessories, and reference points with course and distance to adjacent corner(s) (if determined in this survey). Method and rationale for reestablishment of lost or obliterated corner.



FOUND THE MONUMENT FOR THIS 1/4 CORNER OF MAXIMUM CONTROL. THE CORNER MONUMENT IS A U.S.A. GOVERNMENT PUBLIC LAND SURVEY BRASS CAP ON A PIPE WHICH PROTRUDES ABOVE THE GROUND 0.7'. THE BRASS CAP IS THE MONUMENT FOR THE CORNER AND THE CAP IS MARKED AS SHOWN.

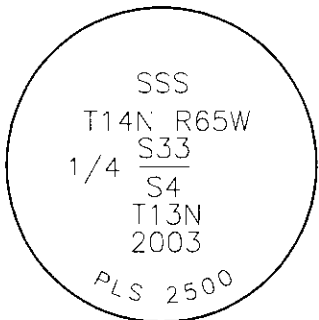
THE MONUMENT IS FOR:

T14N, R65W  
1/4 S33 S4  
T13N  
2003  
6th PM

NOTE:  
LINES SHOWN ARE BETWEEN MONUMENTS AND MAY OR MAY NOT BE SECTION OR SECTION SUBDIVISION LINES.



SCALE 1"=1000'  
(EXCEPT IN TRIVIAL CASES)  
BEARINGS ARE RELATED TO WGS 84 WITH GPS OBSERVATIONS  
DRAWN BY: AM  
P.C. L. PENCE  
COUNTY: LARAMIE



### CORNER MONUMENT SYMBOLS

- RECORD IS FOR THIS CORNER MONUMENT.
- ▲ A RELATED CORNER OR WC MONUMENT.

THE MONUMENT IS MARKED

Date of Field Work: 06/15/2010 Office Reference:

### CROSS INDEX DIAGRAM

1	2	3	4	5	6	7	8	9	10	11	12	13	14	15	16	17	18	19	20	21	22	23	24	25	
A																									A
B																									B
C		6		5			4			3			2												C
D																									D
E																									E
F																									F
G		7		8			9			10			11			12									G
H																									H
J																									J
K																									K
L		18		17			16			15			14			13									L
M																									M
N																									N
O																									O
P		19		20			21			22			23			24									P
Q																									Q
R																									R
S																									S
T		30		29			28			27			26			25									T
U																									U
V																									V
W																									W
X		31		32			33			34			35			36									X
Y																									Y
Z																									Z

Firm/Agency, Address

UELS, LLC

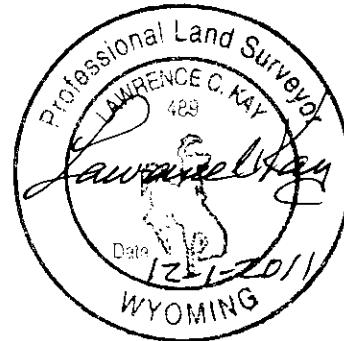
85 South 200 East

Vernal, Utah 84078

Telephone Number: 435-789-1017

This corner record was prepared by me or under my direction and supervision.

SEAL & SIGNATURE



RECORDED 12/08/2011 AT 1:15 PM REC# 581071 BK# 2249 PG# 357  
TEBRA K. LATHROP, CLERK OF LARAMIE COUNTY, WY PAGE 1 OF 1